

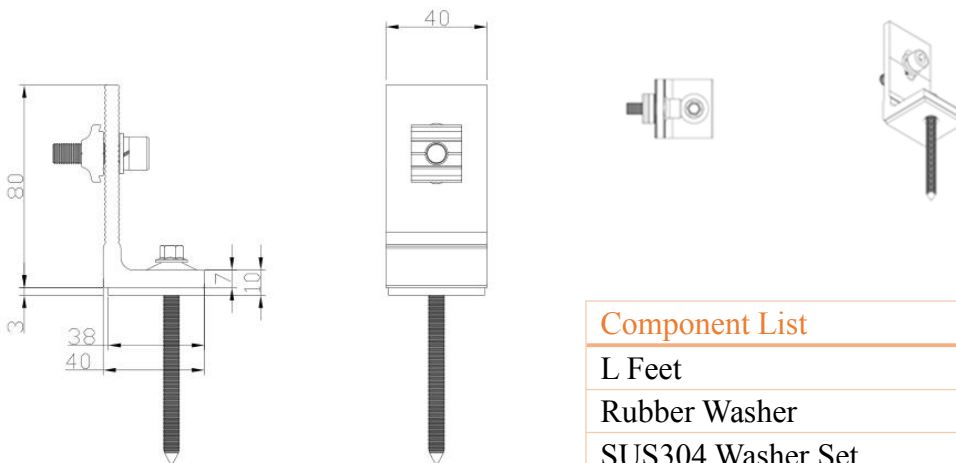
L Feet Mount for Metal Roof



FEATURES

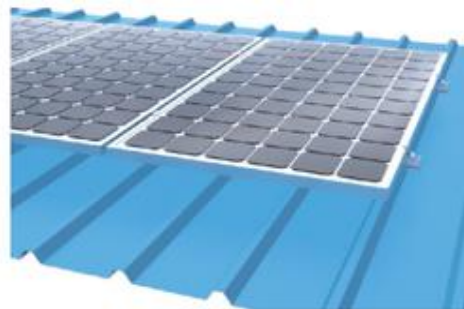
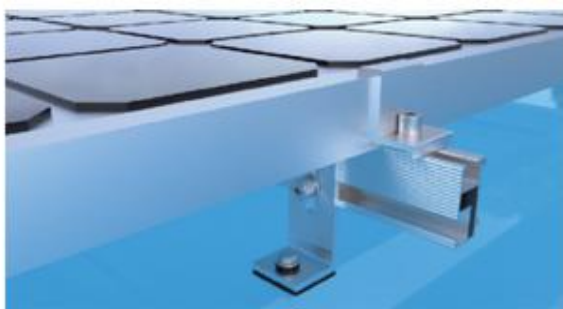
1. Material: Aluminum AL6005-T5
2. Surface Finish: Anodized (10 micron)
3. Weight: 116g/pc
4. Screw Material: Stainless Steel SUS410
5. Waterproof Rubber Washer: EPDM
6. Warranty: 10 Years

OVERALL DIMENSIONS







Component List	Qty./Set
L Feet	1
Rubber Washer	1
SUS304 Washer Set	2
SUS410 Wood Screw	1
T Nut	1
Hexagon Bolt Set (M8*25)	1

INSTALLATION



Components

Picture	Item No.	Description	Material
	GM-R56	Rail (Lengths Available 4.2m, 2.1m and etc.)	Anodized AL6005-T5
	GM-RS-51-AZ	150mm Earthing Rail Joiner with M8X25 Bolts and Star Washers	AL6005-T5 SUS304"
	GM-MRH-L5-AZ	L Feet with SUS410 6.3X80 Wood Screw	AL6005-T5 SUS410
	GM-MRH-L5-AZ-02	L Feet with SUS410 6.3X65 Wood Screw	AL6005-T5 SUS410
	GM-MC-35(40)-AZ	35/40mm Middle Clamp *Other Options Available from 30 to 50mm	AL6005-T5 SUS304"
	GM-EC-35(40)-AZ	35/40mm End Clamp	AL6005-T5 SUS304"
	GM-EK-AZ	Grounding Lug	SUS304
	GM-E-EL-AZ	Earthing Clip	SUS304

Picture	Item No.	Description	Material
	GM-XJ-AZ	Panel wire clip	Stainless Steel
	GM-CT-AZ	SS Cable Tie	SUS304
	GM-MC-60-TF2-AZ	60mm Thin Film Middle Clamp	AL6005-T5 SUS304"
	GM-EC-60-TF2-AZ	60mm Thin Film End Clamp	AL6005-T5 SUS304"

Appendixes & Certification

- ✓ Goomax Tin Roof Mounting System Installation Manual
 - ✓ ASNZ 1170.2 Certification for Roof Mount P V Array Systems-Tin Roof
- *These Engineering Certificates contain important installation requirements. Please obtain from the local distributor.*

Manufacturer Information

Xiamen Goomax Energy Technology Co., Ltd.

Add: #905, Jordan Building, High - tech Park, Huli District, Xiamen China

Web: www.goomaxsolar.com

Email: sales31@goomaxsolar.com

Tel: +86 - 592 - 2938661

Fax: +86 - 592 - 2938662